

Having trouble viewing this email? <http://www.njclearwater.org/>

The Annual BOD Election Meeting and actions are defined by NJFC Bylaws. The embedded ballot adhere to those bylaws. The Annual Election meeting coincides with the Holiday season and we will combine the duties of the election and the fun of our traditional December Holiday gathering. Fair Winds and Happy Holidays, Ed Dlugosz, President NJFC

You may [unsubscribe](#) if you no longer wish to receive our emails.



Solutions eNewsletter

Special BOD Election Edition

Mid-November 2013

In This Issue

[2013 Year-End Membership Meeting](#)

[2013 BOD Election Ballot](#)

[Whale Pond Brook Cleanup](#)

[2013 BOD Election Ballot](#)

[NJFC Website
Become a Member](#)

Enviro Cmte Mtg,
Sunday December 3, 12:30pm
NJFC Circle of Song, 1:30pm
TURNSTILE COFFEE BAR,
1607 Highway 71, Belmar, NJ

Joint Clearwater--Sierra Club Event
Monday, November 25, 6-8:00pm,
Student Life Center (SLC)
Brookdale Community College

Whale Pond Brook Cleanup
December 14, 9:30am
Behind Sheraton Hotel
Route 35N, Eatontown NJ 07724,

December NJFC General
Membership
Meeting

Annual Election and Holiday Party To Be Held at December NJFC General Membership Meeting!

The headlined meeting will held on Sunday, December 8, 2013 and start promptly at 1:00 PM at the Eatontown Community Center (ECC). The ECC is located at 72 Broad Street, Eatontown. It is scheduled to last until 5:00 PM.

As another great and successful year ends, we at NJ Friends of Clearwater want to celebrate its conclusion and thank Members, Friends and Partners with a special December Holiday Pot Luck Party Meeting. We especially want to thank the Jersey Shore Chapter of the Sierra Club for our close work together on a number of important projects this year by inviting them to join us at our Holiday celebration.

More than forty years of Clearwater Potluck Dinner tradition was started by our founder, activist legend Pete Seeger, who found food and drink to be a great magnet and social lubricant to make good things happen. We hope our Sierra guests will join the tradition: Bring enough for yourself and a little to share. We will also have food donated by local establishments to add to the variety.

In addition to good food, we will be enlightened by Dr. Jan Dash who will present a discussion of "Climate Change's

& Election Meeting,
December 8, 1:00pm
Eatontown Community Center
72 Broad St, Eatontown



Google Directions from Your
Location to Monthly Meeting
@ Student Life Center,
Brookdale

Board of Directors
President: Ed Dlugosz
VP: Jim Franchi
Treasurer: Joellen Lundy
Secretary: Lynn Humphrey
Ben Forest, Andrea Spinelli, Marylin &
Tim Johnson, George Moffatt, Ingrid
Heldt, Isis Ra, Chrissie Goedkoop, Brian
Ostering

Article Deadline for Next
Issue is Last Friday of Month

Donate to NJFC



Each will present a discussion of "Climate Change & Sea Level Rise: Impacts on Local Jersey Shore Communities".

Another great Clearwater tradition and educational mechanism is music. Clearwater musicians from our Annual Clearwater Festival will be there throughout to entertain and lead the audience in Song. Our members Brian and Ingrid have promised to keep our spirits up!

Annual December Election Meeting!

The Annual NJFC Board of Directors Election will be held on December 8, 2013 at the NJFC General Membership Meeting [& Holiday Party], according to NJFC Bylaws. The Meeting will start promptly at 1:00 PM and election results will be announced after the Potluck Dinner.

Election Rules and Procedures:

Board candidates and voters must be fully paid-up members. The normal NJFC Board of Directors candidate rotation is that one half of the BOD candidates will be selected by the nomination committee and elected one year; and the other half of the candidates, the next. Ballots can be deposited in the ballot box at the election meeting. Absentee or early voters can mail their ballots to NJFC PO Box in double, sealed envelopes (the inner envelope will have no evidence of voters' names). One ballot with multiple choices per member (see below) and as many separate ballots are valid for each of those constituting the family unit. To be counted, absentee/early ballots must be postmarked by Wednesday, December 4, 2013. Collection of ballots at Post Office will be prior to election meeting for counting.

REMEMBER, YOU MUST BE A PAID-UP MEMBER TO BE A CANDIDATE OR TO VOTE. YOU CAN MAIL IN YOUR DUES VIA:

- CHECKS PAYABLE TO **NJFC**, SENT TO PO BOX 303 RED BANK, NJ 07701
- USING PAYPAL WITH "ANNUAL 2014 DUES"; WRITTEN IN PAYPAL ANNOTATION SPACE; OR
- MAKE PAYMENT AT THE MEETING AT MEMBERSHIP DESK PRIOR TO ELECTION ANNOUNCEMENT.

Posted Membership Dues are:

Individual \$25; Family \$35; Student/Senior \$10; Individual Lifetime \$250; Family Lifetime \$400.

NJFC Membership Forms and Info are available at:
www.mcclearwater.org/docs/membership-form.htm and

can be sent c/o: 2014 Dues, PO Box 303, Red Bank, NJ 07701.

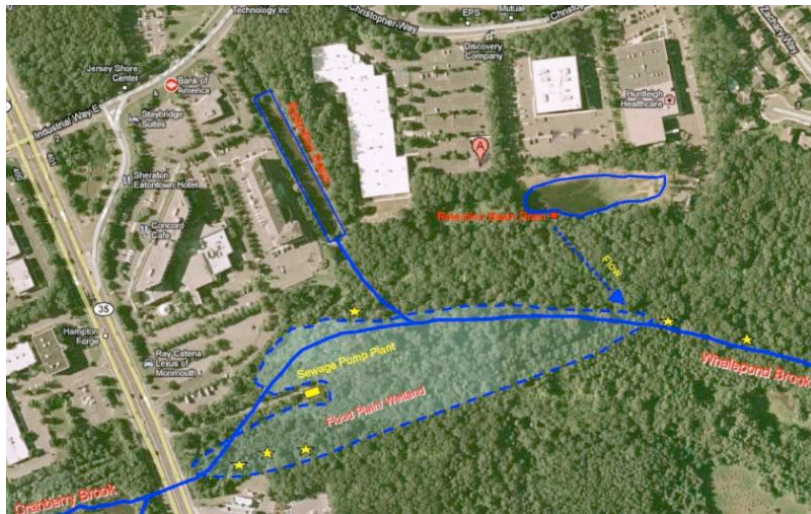
Official Ballot at end of this Special *Solutions eNewsletter*.
Remove Ballot from newsletter prior to submittal.

Ongoing Clearwater Project: Whale Pond Brook Cleanup

Who?: NJ Clearwater & Eatontown Environmental Commission (EEC), partners with and in coordination with the Whale Pond Brook Watershed Association (WPBWA)

What?: WHALE POND BROOK CLEANUP

When?: December 14 2013, 9:30AM Registration until NOON



Where?: Northern bank of the Whale Pond Brook on the northbound, i.e., east side of Rt 35. Gathering spot [A] will be the back, south-east (SE) corner parking lot of medical offices/suites at 10 Industrial Way East (IWE), Eatontown, NJ.

Why?: This Cleanup is part of the multi-year effort to restore/renew Whale Pond Brook Watershed to its pre-sprawl beauty and natural fish spawning activities. SuperStorm Sandy accelerated need to re-clean this area in preparation for creating an end-to-end Greenway from Eatontown to the Ocean.

How?: Physical Activity; teams will be formed & assigned in locations on north side of Whale Pond Brook adjacent to Sheraton & Staybridge Hotels, Medical Suites, and buildings along Christopher Way.

Parking: Parking lots of medical suites and Sheraton/Staybridge Hotels south parking lot

Equipment: Gloves & bags provided by Clearwater and EDPW; Bring sturdy boots, long-sleeved shirts, long pants, hats & other sturdy/warm clothing.



OFFICIAL NJFC BOD BALLOT

Please vote for up to 5 nominees (this would include

the names placed in nomination by the Board of Directors AND/OR any eligible write-in candidates. VOTE CAREFULLY - A ballot with MORE than the maximum 5 will be disqualified. ALSO, if you decide to change a vote, make sure your change(s) very clear or the vote may incorrectly count your choices:

- Ben Forest
- Jim Franchi
- Sue Goedkoop
- Ingrid Heldt
- Andrea Spinelli

Write In: _____
(Write In Nominee must be eligible, present,
and give verbal permission & be IAW Bylaws
and info above)



[Forward this email](#)

This email was sent to newsletter@njclearwater.org by newsletter@njclearwater.org | [Update Profile/Email Address](#) | Instant removal with [SafeUnsubscribe™](#) | [Privacy Policy](#).

NJ Friends of Clearwater | P.O. Box 303 | Red Bank | NJ | 07701